

# AF non-reversing, 3-pole

For applications up to 1150 hp, 900 kW  
Electronic AC/DC operated coils



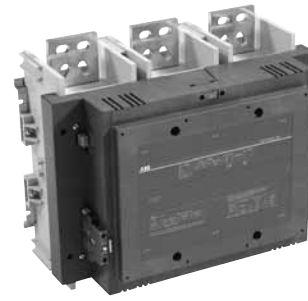
AF09...AF16



AF95...AF110



AF210...AF300



AF1350...AF2650

## Electrical ratings ①

IEC/EN 60947-4-1					UL 508, 60947-4-1A CSA C22.2 No.14, 60947-4-1-07		UL SP C US		Non-reversing		Standard auxiliary contacts ③		Catalog number
Rated operational current I <sub>e</sub> , AC-1, AC-3 (A)		Rated operational power P <sub>e</sub> , AC-3, 55°C (kW) ②			AC general purpose ratings (A)	Maximum motor switching current (A)	AC motor ratings, breaking all lines, three phase, 50/60 Hz (hp)				NO	NC	
AC-1 40°C	AC-3 55°C ②	220... 240V	380... 400V	690V	600V		200... 208V	220... 240V	440... 480V	550... 600V			
25	9	2.2	4	5.5	25	9	2	2	5	7.5	1	-	AF09-30-10-Δ
											-	1	AF09-30-01-Δ
28	12	3	5.5	7.5	28	11	3	3	7.5	10	1	-	AF12-30-10-Δ
											-	1	AF12-30-01-Δ
30	18	4	7.5	9	30	17	5	5	10	15	1	-	AF16-30-10-Δ
											-	1	AF16-30-01-Δ
45	26	6.5	11	15	45	24.2	7.5	7.5	15	20	-	-	AF26-30-00-Δ
50	32	9	15	18.5	50	30.8	10	10	20	25	-	-	AF30-30-00-Δ
50	38	11	18.5	22	50	-	-	-	-	-	-	-	AF38-30-00-Δ
100	50	15	22	30	80	54	15	20	40	50	1	1	AF50-30-11-Δ
115	65	18.5	30	37	90	68	20	25	50	60	1	1	AF63-30-11-Δ
125	75	22	37	40	105	80	25	30	60	75	1	1	AF75-30-11-Δ
145	96	25	45	55	150	88	30	30	60	75	1	1	AF95-30-11-Δ
160	110	30	55	75	150	104	30	40	75	100	1	1	AF110-30-11-Δ
250	145	45	75	110	230	130	40	50	100	125	1	1	AF145-30-11-Δ
275	185	55	90	132	250	156	50	60	125	150	1	1	AF185-30-11-Δ
350	210	59	110	160	300	192	60	75	150	200	1	1	AF210-30-11-Δ
400	260	80	140	200	350	248	75	100	200	250	1	1	AF260-30-11-Δ
500	305	90	160	250	400	302	100	100	250	300	1	1	AF300-30-11-Δ
600	400	110	200	315	550	414	125	150	350	400	1	1	AF400-30-11-Δ
700	460	132	250	355	650	480	150	200	400	500	1	1	AF460-30-11-Δ
800	580	160	315	500	750	604	250	250	500	600	1	1	AF580-30-11-Δ
1050	750	220	400	600	900	722	250	300	600	700	1	1	AF750-30-11-Δ
1260	-	-	-	-	1210	-	-	-	-	-	1	1	AF1250-30-11-Δ
1350	860	257	475	750	1350	954	-	400	800	1000	1	1	AF1350-30-11-Δ
1650	1050	315	560	900	1650	1050	-	450	900	1150	1	1	AF1650-30-11-Δ
2050	-	-	-	-	2100	-	-	-	-	-	1	1	AF2050-30-11-Δ
2650	-	-	-	-	2700	-	-	-	-	-	1	1	AF2650-30-11-Δ

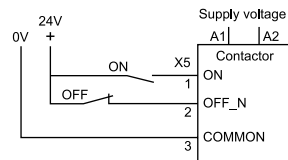
## Coil voltage selection chart (Δ)

Rated control circuit voltage U <sub>c</sub> ④	AF09... AF38	AF50... AF300	AF400... AF750	AF1250	AF1350... AF2650
20...60V DC	11	72	-	-	-
24...60V AC	11	-	-	-	-
24...60V DC	-	-	68	68	-
48...130V AC/DC	12	69	69	69	-
100...250V AC/DC	13	70	70	70	70
250...500V AC/DC	14	-	71	-	-

Example(s):  
24V DC input voltage: AF16-30-10-11  
120V AC input voltage: AF300-30-11-Z0

## Control inputs

AF400...AF2650 are equipped with integral low voltage inputs, allowing for direct PLC control:



① For selection purposes; for complete electrical ratings, see Technical Data.  
② AF09... AF38 at 60°C.  
③ Auxiliary contacts integral for AF09...AF16; all others side-mount.  
④ AC coil input voltage(s) at 50/60 Hz unless specified.